

# MyEquipAuctions.com™

March 11, 2024

**INDUSTRIAL DIVISION**

Online & Onsite Auctions For The Metalworking Industry

## ONLINE ONLY AUCTION

### COMPLETE FACILITY LIQUIDATION ASSETS FORMERLY OF LIBBEY GLASS

**BID NOW!** Closes Tues, March 26th • 10am CT

**Location:** Shreveport, LA

**Contact:** Josh S at [joshs@schneider.com](mailto:joshs@schneider.com)

- Equip. Auctions
- Plant Closure Clean Out/Demo
- Complete Plant Sales
- Facility Demolition Projects
- Plant Restoration & Construction Services
- Equip. Rigging & Removal
- Appraisals

**BidSpotter**



View of Libbey Glass Facility



80'/90' Smit & E.W. Bowman Lehr's



Bernard and Bonnefond Varivolt Transformer



Zeks MultiPlex Air Dryers



Cooper Turboair 48 Air Compressors



Trane Air-Cooled Series R Chiller



Poreba Lathe



ALVEY 800 Palletizing Systems



SLY Dust Collector/  
Bag House



Hyster Lift Trucks

Visit [www.schneiderindustries.com](http://www.schneiderindustries.com) for more information about this auction!



**SCHNEIDER INDUSTRIES, INC.**

121 Hunter Ave., Suite 204 • Saint Louis, MO 63124

314-863-7711 • [www.schneiderindustries.com](http://www.schneiderindustries.com)



# ONLINE AUCTION

**Metal Working,  
Machine Shop Equipment,  
Tooling & More! "900 + Lots"**

***The Estate of Bernie Kaczowski***  
**Rotterdam, NY (US)**

**Bids Open: March 1, 2024**

**Inspection: Wednesday, March 20th, 9:00 AM - 1:00 PM**

**Bids Close: Friday, March 22nd, 11:00 AM**

**[CollarCityAuctions.com](https://www.CollarCityAuctions.com)**



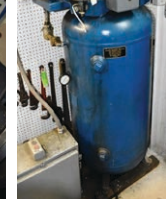
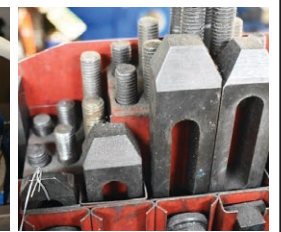
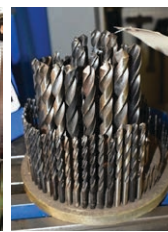
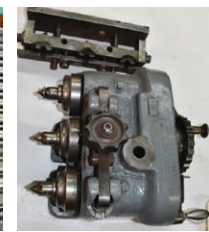
***The Estate of Bernie Kaczowski***  
**Rotterdam, NY (US)**

**Bids Open: March 1, 2024**

**Inspection: Wednesday, March 20th, 9:00 AM - 1:00 PM**

**Bids Close: Friday, March 22nd, 11:00 AM**

**[CollarCityAuctions.com](https://www.CollarCityAuctions.com)**



**518-895-8150**



**Global Auction, Real Estate & Certified Appraisal Solutions**





# CNC CONSIGNMENT AUCTION SALE

50+ SUPER HIGH END CNC MACHINE TOOLS - MULTI LOCATIONS  
EUROTECH, FANUC, DOOSAN, OKUMA, HWACHEON,  
TORNOS CHEVALIER

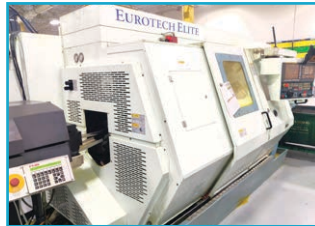


**75 E Palatine Road  
Prospect Heights, IL 60070**

**BID ONLINE AT: BidSpotter**



**BIDDING CLOSES:  
MARCH 20TH • 10:00 AM CT**



**DO YOU HAVE MACHINES TO SELL???**  
**CALL 312-280-1234**

**Go to: [www.premierarg.com](http://www.premierarg.com) for further updates**

Need an auction? Give us a call  
312-280-1234



MACHINES FOR SALE?  
CALL 312-280-1234

**REGISTER & BID ONLINE - Buyers Premium: 18%**  
**[www.premierarg.com](http://www.premierarg.com)**

Premier License: 044000209 Glenn Gray License: 041000721

Premier Asset Recovery Group: 77 E. Palatine Rd., Prospect Heights, IL 60070

**312-280-1234 • [info@premierarg.com](mailto:info@premierarg.com)**

# AUCTION CALENDAR

## COMPLETE SESAME SEED PROCESSING FACILITY - TIMED ONLINE AUCTION

**MARCH  
5TH**

Taylor,  
MI

Formerly operated by **Sesaco**

- Seed Roasting & Cooling
- Grinding
- Peeling and Drying
- Packaging Department

**AUCTION IS OVER!**



IN PARTNERSHIP WITH  

## STOCK PREPARATION EQUIPMENT & COMPONENTS FROM 120" BOXBOARD MACHINE - TIME ONLINE AUCTION

**MARCH  
7TH**

Kalamazoo,  
MI

No longer required by  
**Graphic Packaging International**

- K3 Paper Machine & Stock Prep
- Stock Prep Area Equipment & Spares
- Production & Facility Support Equipment

**AUCTION IS OVER!**



IN PARTNERSHIP WITH  

## COMPLETE 15 BBL BREWERY AND TAPROOM - TIMED ONLINE AUCTION

**MARCH  
12TH**

Oakland,  
CA

Formerly of **Ale Industries**

- Brewhouse
- Fermenters and Brite Tanks
- Filling And Canning Equipment
- Plant Facilities & Rolling Stock
- Tasting Room



## MANUFACTURER OF HYDROGEN FUEL CELLS - TIMED ONLINE AUCTION

**MARCH  
19TH &  
20TH**

Folsom,  
CA

2-Day Auction Formerly of  
**Altergy Systems**

- Production Equipment
- Machine Shop
- Quality Control, Test and Inspection
- Material Handling



Leading Industrial And Commercial Liquidators.

Contact Rabin Worldwide For Your Liquidation And Equipment Needs Today.

Check Rabin.com For More Upcoming Food & Confectionery Equipment Auctions

+1.415.522.5700

Email: [info@rabin.com](mailto:info@rabin.com)

See it all now at... **rabin.com**



## UPCOMING AUCTION SALES FROM APEX AUCTIONS USA



**Bidding Ends: Feb 29TH • 11:59 AM CST**  
**SURPLUS TO THE NEEDS OF AN AUTOMATION**

**AUCTION**

Online & Make Offer Sale Starting: 2018 BLM Adige-Sys L55 CNC  
6kW Fibre Laser Cutter, Master Master Plus 8' x 21' Table CNC  
Plasma Cutter, (2) Multi Cam 7-205-R CNC Router, Nomura B-100RT-2  
4: Vertical Boring Mill, (3) Assorted Boring Mill Heads, Fosdick 4' x  
13" Radial Drill, 2011 Milltronics RH33 CNC Vertical Machining Center,  
Plus More!



**Bidding Ends: March 6TH • 2:00 PM CST**  
**SURPLUS TO THE ONGOING NEEDS OF**  
**UNION FUND COMPONENTS DAYTON**

**Featuring:** V-Groove Hydraulic Downcutting Presses up to 2,000-ton Capacity, Mazak 795 CNC Multi-Axis 50Kw Laser, Over 15 Millermatic Welding Heads, 300-AMP, Liburdi Dimetrics Fusion Welding Heads, Miller Chillers, Gorbelt Cranes, Donaldson Torit Dust Collectors, Bridgeport Mill, Shop Support!



**Bidding ACTION** **March 7TH • 11:00 AM CST**

## AUCTION SALE OF TLK TOOL & STAMPING INC.

**Featuring: Stamping Presses up to 110-Ton, Press Feed & Coil Handling Equipment, 2019 Hole Drill Type EDM, Toolroom Equipment, Plus Much More!**



**Bidding Ends: March 12TH • 11:00 AM CDT**

**SURPLUS TO MULTIPLE  
GE AEROSPACE BUSINESSES MARCH 2024**

**All assets have been moved to a riggers warehouse for the convenience of sale. Most Assets are Like New!! Features 3D Metal & Plastic Printers, Concept Laser Powder Seives, 3D Printer Ancillary Equipment, Makino & DMG 5-axis CNC Vertical Machining Centers, Atlas Copco Nitrogen Generators, Tool Room Equipment, Dust Collectors, Finishing Equipment, EDM, Coordinate Measuring Machines, Plus Much More!!**



**Bidding Ends:**  
**March 13TH • 12:00 PM CDT**

## CNC AND TOOLROOM EQUIPMENT

## SURPLUS TO THE NEEDS OF BAKER HUGHES - JACKSONVILLE

**Register today! Featuring CNC Machining, EDM, Knee Mills, Plus More**  
**Featuring: CNC Horizontal Machining Center: 2012 Okuma Space**  
**Center MA-500HP 4-Axes • CNC Vertical Machining Centers: 2015**  
**Okuma Genos M560V, 2011 HAAS TM-1P • Wire EDM: 2014 Mitsubishi**  
**MV1200S MD + • Knee Mills: Sharp OMV Retrofitted to CNC, Promax**  
**YCM-16VS • Wet Type Blast Cabinet: Pressure Blast A45P-S • Haz Mat**  
**Building: Securall B2400.**



## PRE-AUCTION ANNOUNCEMENT!

**MULTI-MILLION DOLLAR OFFERING BY ORDER  
OF MARK TWO ENGINEERING BY FATHOM**

**Online Auction of a Swiss Screw Machining Medical Device Manufacturing Facility by order of Mark Two Engineering by Fathom**  
**• Featuring: More than (25) Citizen CNC Swiss Screw Machines Most New 2019-2022 • (5) Fanuc Robodrills • (5) Late Model CNC Vertical Machining Centers • (2) 8-Axis CNC Grinders • CNC Wire EDM • Toolroom Machinery • Inspection • Plus Much More!**

## REGISTER TO BID



# Apex Auctions

# Mathew Koster

315 Walt Whitman Road • Huntington Station, NY 11746

mkoster@apex-group.com • (631) 418-8850

Visit [Apexauctions.com](http://Apexauctions.com) for all our US Sales



# (5) UPCOMING AUCTIONS

650 St. Croix Avenue • New Richmond, WI 54017

Rise.org #2



BEGINS: TUES, FEB. 13TH  
10:00 AM CST



Surplus to Continued Operations  
of Rise.org

32500 Excellence Avenue • Pueblo, CO 81001

Kurt Manufacturing



BEGINS: TUES, FEB. 27TH  
6:00 AM CST



Complete Machine Shop Due to  
Relocation of Division.

2312 East Avenue South • La Crosse, WI 54601

Trane Technologies  
#8



BEGINS: TUES, MAR. 5TH  
6:00 AM CST  
ENDS: TUES, MAR. 12TH  
10:00 AM CST



Surplus to the Continued Operations of  
Trane Technologies

8406 Sunset Road NE • Spring Lake Park, MN 55432

Rise.org #3



BEGINS: TUES, MAR. 12TH  
6:00 AM CST  
ENDS: TUES, MAR. 19TH  
10:00 AM CST



Surplus to Continued Operations  
of Rise.org

8370 W. 35W Service Drive NE • Blaine, MN 55449

March 2024 Machine Tool Marketplace



BEGINS: THURS, MAR. 7TH • 6:00 AM CST  
ENDS: THURS, MAR. 21ST • 10:00 AM CST

Wide Variety of Metalworking Machinery  
and Related Items. Accepting Consignments  
Starting on Thursday, January 26th.  
Call (612) 991-7008 for More Information.



Premier  
Machinery Auctions, LLC

8370 W. 35W Service Drive NE  
Blaine, MN 55449

Phone: (612) 991-7008

info@premiermachineryauctions.com

www.premiermachineryauctions.com



★ ★ **ONLINE ONLY AUCTION** ★ ★

# MAJOR INTERNATIONAL UV/EB CURING PRODUCTS MANUFACTURER

3300 Westinghouse Blvd • Charlotte, NC 28273

**COMPLETE  
PLANT  
LIQUIDATION**

**DATE: BIDDING ENDS MARCH 12TH**

Inspection: Monday, March 11th from 9:00 AM – 4:00 PM



## • HIGHLIGHTS •

- (15) 316 Stainless 20,000 Gal. vertical silos with interior steam coils
- (13) 316 Stainless steam jacketed/coiled reactors to 11,000 Gal.
- (30) Stainless, Monel 400, and Inconel mixing tanks
- QC Lab with 2022 Agilent HPLC and GC equipment
- 2022 Sullair 200 HP and 300 HP variable speed air compressors
- 2022 Kubota tractor-loader with mower deck
- Forklifts, scissor lifts, and electric pallet jacks
- Vacuum pump and centrifugal blower skids
- 316 stainless steel diaphragm and centrifugal pumps
- Repair and maintenance shops
- MRO spare parts, supplies, and stores inventories *and Much More!*

*Terms: To be sold in accordance w/CRG terms as published on web & auction catalog. Capital Recovery Group, LLC NC Firm Lic #7694*

*In Conjunction With*



**www.crgllc.com • (800) 300-6852**



# ONLINE ONLY Auction

**NO LONGER NEEDED IN THE CONTINUING OPERATIONS OF  
ACTIVE PRECISION MANUFACTURING, INC.**

**1975 North 17th Ave. • Melrose Park, IL 60160**

**BIDDING STARTS: WEDNESDAY, FEBRUARY 28TH**

**BIDDING ENDS: WEDNESDAY, MARCH 13TH**



## FEATURING:

- 2016 NEWAY 86 IN X 196 IN MODEL NL 2050H CNC FLAT BED LATHE
- GIDDINGS & LEWIS 84 IN. MODEL 84VTC CNC VERTICAL BORING MILL
- VANGUARD MODEL CAK80485D CNC LATHE
- TOS CELAKOVICE 60 IN X 15 FT MODEL SU125 ENGINE LATHE
- 2005 HAAS MODEL VF-2B CNC VERTICAL MACHINING CENTER
- 2004 HAAS MODEL VF-4B CNC VERTICAL MACHINING CENTER
- HAAS 4TH AXIS
- DAEWOO PUMA MODEL 12L-B CNC TURNING CENTER (1996)
- SUMMIT MODEL HTM C5 CNC HORIZONTAL BORING MILL, BUILT-IN ROTARY TABLE
- MEUSER MODEL M76.3FS HORIZONTAL BORING MILL
- GIDDINGS & LEWIS MODEL 340T HORIZONTAL BORING MILL
- LEBLOND / MAKINO CNC VERTICAL MACHINING CENTER (1986)
- KURAKI CNC VERTICAL MACHINING CENTER
- MARVEL SERIES 8 BANDSAW
- DYNAMIC MODEL 1760 LATHE
- JET VERTICAL MILLING MACHINE
- BRIDGEPORT 1-1/2HP VERTICAL MILLING MACHINE
- MHT 6 X 12 HAND FEED SURFACE GRINDER (1986)
- SCHERR-TUMICO 30 IN. OPTICAL COMPARATOR
- INGERSOLL-RAND 40HP MODEL EP40SE AIR COMPRESSOR
- INGERSOLL-RAND COMPRESSED AIR DRYER
- WELDING TABLE
- WELDERS
- (6) JIB CRANES
- HYSTER 25,000LB. CAP. MODEL 250 YARD LIFT TRUCK
- CATERPILLAR 10,000LB. FORKLIFT TRUCK
- 2006 FORD F-550 FLAT BED TRUCK
- 17 FT. TANDEM AXLE EQUIPMENT TRAILER

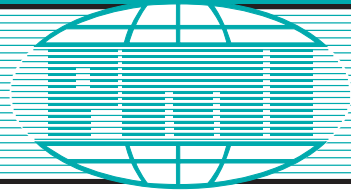


**W** GLENN A.  
**INTERNITZ** LLC  
INDUSTRIAL AUCTIONEERS & APPRAISERS

1401 Lunt Avenue • Elk Grove Village, Illinois 60007 • P. 773-290-1827 • F. 773-866-9601  
glenn@winternitzauction.com

**www.winternitzauction.com**





# AUCTION

**2 DAYS • 1 LOCATION • KATY, TEXAS**

## CONSTANTIN PRECISION INSTRUMENTS

7633 CHEROKEE ROAD, KATY, TEXAS 77494

**DAY ONE: WEDNESDAY,  
MARCH 13 – LIVE ONSITE  
W/WEBCAST • 10:00 A.M.**

**PRECISION MANUFACTURER OF OILFIELD,  
SEMICONDUCTOR & AEROSPACE COMPONENTS CLOSING**  
FEATURING: Mori Seiki NZL6000BY/4000 Horiz. Turning & Milling Center; Deckel Maho DMF-500 5-Axis VMC; Feeler FBM110R 5-Axis CNC HBM installed new in 2019; 2018 Haas UMC-1000 & UMC-750; Samsung SL-45XLY, (2) SL-45MC/3000's; QC & Support Equipment; Manual Machine Tools; 2015 TESLA MDL S85D; 2017 Ford F-450 Flatbed Truck; Raw Material; Award Winning Houston Livestock Rodeo Artwork & Much More! Don't Miss This Sale!

**INSPECTION:** Monday & Tuesday, March 11 & 12, 9:00 A.M. to 4:00 P.M.

2012



DECKEL MAHO MDL. DMF-500 LINEAR 5-AXIS VERTICAL MACHINING CENTER



SAMSUNG MDL. SL-45XLY MULTI AXIS CNC MILLING AND TURNING CENTER

2014



MITUTOYO LH-600 DIGITAL HEIGHT GAGE



IKEGAI MDL ANC56 CNC CENTER DRIVE/DUAL TURRET HOLLOW SPINDLE LATHE



SAMPLE VIEW OF CAT 40 AND CAT 50 TOOLING



MITSUBISHI MDL. MV4800 ADVANCE TYPE 2 WIRE EDM MACHINE

2021

**DAY TWO: THURSDAY, MARCH 14 – TIMED ONLINE – NO ONSITE BIDDING  
BIDS START CLOSING AT 10:00 A.M.**

FOR BIDDING AT THIS AUCTION. Go to [www.pmi-auction.com](http://www.pmi-auction.com) and click on BidSpotter on our calendar page for this auction sale.

**BUYER'S PREMIUM:**  
15% ONSITE • 18% WEBCAST

Read Partial Terms & Conditions on Page 7

Sale Conducted By:

**PLANT & MACHINERY INC.**  
AUCTIONEERS • APPRAISERS • LIQUIDATORS • REAL ESTATE

1304 Langham Creek Drive, Suite 454, Houston, Texas 77084

PHONE: (713) 691-4401

FAX: (713) 672-7905

Ron Moore, TX Lic. #7314

E-MAIL: [pmi@pmi-auction.com](mailto:pmi@pmi-auction.com) • WEBSITE: [www.pmi-auction.com](http://www.pmi-auction.com)

In Cooperation With:



35 Pinelawn Road  
Melville, New York 11747

Phone: (631) 249-5566

[www.prestigeequipment.com](http://www.prestigeequipment.com)



**CONSIGNMENTS ACCEPTED NOW**

# 2-Day Spring Public **AUCTION** March 14th & 15th

*What can we sell for you?  
Deliver items Now!*

**Deliver:** Monday - Friday  
8am - 4pm

**Location:** 13340 Florida Blvd.  
Livingston, LA 70754



Auction Details and Lot Listings at: [www.HendersonAuctions.com](http://www.HendersonAuctions.com)



**Henderson  
AUCTIONS**

800.850.2252 | 225.686.2252 | [info@hendersonauctions.com](mailto:info@hendersonauctions.com)  
10% Buyer's Premium on each item purchased. | Auctioneer: J. Henderson LA AB-459

Liquidations | Government Surplus | Marine  
Industrial | Farm | Construction | Collector Cars  
*What can we sell for you?* 225.686.2252  
Location: 13340 Florida Blvd. Livingston, LA 70754

**NAA**  
Auctioneer

LOUISIANA  
AUCTIONEERS  
**LAA**





# ONLINE AUCTION SALE

## 2023 MASSIVIT 5000 3D PRINTER

**START DATE:** Monday, March 18th at 12:00 Noon

**END DATE:** Wednesday, March 20th at 12:00 Noon

**Location:**

**25 Mount Laurel Road • Hainesport, NJ 08036**

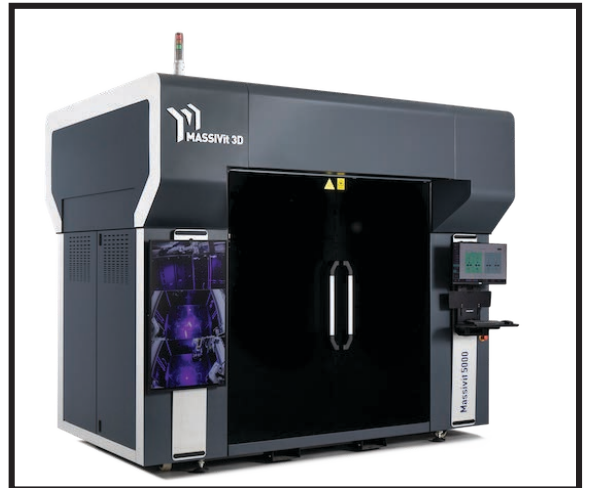
**Removal will be by appointment only!**

### **AUCTION TO INCLUDE:**

- 2023 Massivit 5000 3D Printer w/Dual Printing Heads
- Print Configuration – 2 Printing Heads Capable of Printing 2 Different Objects Simultaneously
- Print Volume –  
W x L x H: 1.17 x 1.5 x 1.8m / 4 x 5 x 6 Feet
- Maximum Object Weight – 150kg/330 Lbs.
- Productivity Material – Dimengel – Massivit Proprietary UV LED Curing Gel
- Workflow & Software – Massivit Proprietary Front-End Software (On Machine)
- Massivit Smart: Massivit Proprietary Software for Slicing/Pre-Press File Preparation

### **INCLUDED FEATURES:**

- Scale, Rotate, Slice, Support Generation to be Ran on Separate PC (Not Included)
- Input Format: STL
- System Dimensions –  
W x L x H: 3.1 x 2.2 x 2.8 meters / 10.17 x 7.2 x 9.1 Feet
- System Weight 2500kg / 5,511 Lbs. (Unpacked)



**Preview: Monday, March 18th from 9 AM to 4 PM**

FOR MORE  
INFORMATION

Visit  
**Comly.com**

Wm. F. Comly & Sons, Inc.



**COMLY**  
AUCTIONEERS & APPRAISERS  
— 1834 —

(215) 634-2500 - [auctions@comly.com](mailto:auctions@comly.com)

# 2-DAY LIVE WEBCAST AUCTION

Upon Instructions  
from the Owners



**Genesis**  
Motion Solutions

**Multi Million  
Dollar Event!**

## State-of-the-Art CNC Gear & Machining Facility, Equipment as Late as 2023!

Featuring CNC Hermle, Gleason, Liebherr & Nidec Gear Equipment, CNC Studer Grinding & CNC Machining Facility with Plant, Support and Inspection Equipment.

### SALE INCLUDES:

#### GEAR GRINDER, SHAPER, UNIVERSAL CYLINDRICAL GRINDER, GEAR MEASURING & DEBURR MACHINE:

2018 LIEBHERR LGG400M Gear Grinding Machine • 2021 NIDEC ST40A Gear Shaping Machine • 2021 STUDER S33-1045 Cylindrical Grinding Machine • 2019 GLEASON 175GMS Fine Module Gear Measuring System • 2022 CDMC Gear Deburring Machine

#### VERTICAL MACHINING CENTERS & TURNING CENTERS:

2019 HERMLE C22UP Dynamic 5-Axis Machining Center • 2016 HERMLE C42U 5-Axis Milling Turning Center • 2020 GF AGIECHARMILLES Mikron HEM 800 CNC Machining Center • 2019 TORMACH 1100M CNC Milling Machine • 2020 NAKAMURA TOME WT300 Two-Turret Two-Spindle CNC Turning Center • 2014 NAKAMURA TOME SC-250 CNC Lathe

#### LASER CUTTER, EDM, RESIN DISPENSING SYSTEM:

2022 IPG PHOTONICS LASER 450 W Fiber Laser Cutting Machine • 2014 AGIECHARMILLES Cut 2000 S Wire EDM Machine • 2022 DEMAK CV ASI Automated Potting Machine

#### BANDSAWS, MILLING MACHINES, LATHES, SHEAR, PARTS

WASHER: 2023 HYDMECH H-14A Dual Column Bandsaw • 2019 MARVEL Spartan PA360EPC Horizontal Bandsaw • 2021 DARBET 949VS Vertical Milling Machine • 2015 MANFORD S-150VSL Vertical Milling Machine • 2015 SHARP EMC1840 Gap Bed Lathe • EISEN 1236GH Gap Bed Lathe • MAGNUM Foot Shear 52" • 2021 PROCECO PCE 28X36-E-500-1-R-BO Parts Washer

#### CMM MACHINES, ENGRAVERS, 3D PRINTERS, WINDERS, PRECISION SUPPORT EQUIPMENT:

2019 MITUTOYO Crysta Apex V 574 CMM Mycat Software • 2018 MITUTOYO Crysta-Apex S574 CMM Mycat Software • 2020 ZEISS Duramax 5/5/5 (Facelift Z Black) Twin Table CMM Mycat Software • 2023 TURNKEY TECHNOLOGIES SLE20 Laser Engraver • 2015 FIBERMARK Laser Engraver • 2022 ITASCA Winder • 2019 ERASAN Winder System • 2012 HYFRA HAIMER Heat Shrink Fitting System • 2020 ULTIMAKER 3D Resin Printer • (2) MARKFORGED 3D Printers • (2) FORM LABS Design 3D Printers • (5) MARKFORGED 3D Printers • (2) THOR LABS Nexus Optical Tables • 2021 KEYENCE 2D Optical Measurement System • MITUTOYO Roundtest System • (3) 2022 ELECTROM INSTRUMENTS Surge Testers • MITUTOYO Profile Projector • 2021 HBM Multi Channel • (3) MITUTOYO Graplate's • Ultrasonic Cleaner • MITUTOYO Autoset Z-Axis Alignment System • MITUTOYO Digital Linear Height Gauge • THE MODAL SHOP Vibration Calibrator • FLUKE Scopemeter • PRUFTECHNIK Optalign System • BEAMEX Calibration Pump • BENCHMARK Easy-Laser Alignment Kit • BEAMEX Advanced Field Calibrator • Qty. of Torque Meters, Oscilloscopes, Micrometers, Pin Sets, Gauge Block Sets, Precision Tooling & Much More

R&D EQUIPMENT • METAL INVENTORY • GENESIS INVENTORY ROLLING STOCK, COMPRESSORS, DRYER & CRANES  
GENERAL EQUIPMENT OFFICE EQUIPMENT & FURNISHINGS



LIEBHERR LGG 400 M Gear Grinding Machine



HERMLE C 22 U 5-Axis CNC Vertical Machining Center



STUDER S33 CNC Universal Cylindrical Grinder

**Tuesday & Wednesday, March 19 & 20 @ 9am PT Each Day**

INSPECTION: March 17 & 18, 9am to 5pm or by Appointment • LOCATION: 6279 202 St. Langley, BC, Canada

SALE CONDUCTED BY:

**Maynards**  
SINCE 1902  
AUCTIONS | LIQUIDATIONS | APPRAISALS

For additional information, call us at 248.569.9781  
or email [customerservice@maynards.com](mailto:customerservice@maynards.com)

**maynards.com**

Place your bid now!  
REGISTER AT  
**BidSpotter**

18% Buyer's Premium. Sale to be Conducted in \$US.



# METAL FABRICATING MACHINERY

## ONLINE AUCTION

**PAUL NORMAN COMPANY**

**BIDDING CLOSES: THURSDAY, MARCH 21ST, BEGINNING AT 10 AM EDT**

**INSPECTION: TUESDAY, MARCH 19TH, 10 AM – 3 PM**



**TERMS:** 15% buyers premium will apply. contact us for complete terms and catalog.

**WWW.ROSENSYSTEMS.COM**

**PRESS BRAKE:**

- PACIFIC MDL FF175-12-I, 12' X 3/16", 117 TON CAPACITY, HYDRAULIC, 127" BETWEEN HOUSINGS, AUTO GAUGE 36" BACKGAUGE, S/N 9417
- ACCURPRESS MDL 71012, 130 TONS, MFG 12/97, 12' X 1/4", 127" BETWEEN HOUSINGS, 36" SIDE MOUNTED HYDRAULIC UNIT WITH 20-HP MOTOR, CNC BACK GAUGE, S/N. 4716
- DIACRO PROMECAM MDL AF-60-6, 80" WIDE, 66-1/2" BETWEEN HOUSINGS, 40" BACKGAUGE, DRC DYNABEND 3 CONTROLS, HYDRAULIC, S/N 0204020100
- ASSORTED PRESS BRAKE DIES

**SHEARS:**

- ACCURSHEAR MDL 625012, 12' X 1/4", MOTORIZED BACKGAUGE S/N 1609, (NEW 1993)
- DIACOR PROMECAM MDL GTH420, 80" WIDE, 36" BACKGAUGE, SONY X-Y DIGITAL READOUT S/N 330
- DANBY MDL S1204, 4-9 USGMM, 1250 MM WORKING LENGTH, 7.5KW S/N 111012

**TURRET PUNCH:**

- STRIPPITT FABRI-CENTER 1000R, S/N 200042993, CATALOG #121713-035, 20-STATIONS, 48" X 90" TABLE
- STANDALONE CNC CONTROLS, HYDRAULICS

**PUNCH:**

- STRIPPITT SUPER 30-40 HD, S/N 16131980, CATALOG #113040, SINGLE, 33" THROAT

**FABRICATOR:**

- STRIPPITT SUPER 303-0 PUNCH CATALOG #113030-134, S/N 199683083, 40" THROAT, TRAX X-Y DIGITAL READOUT
- WALES/STRIPPITT, PLATE NOT READABLE

**SAW:**

- POWERMATIC MM 87 VERTICAL BAND SAW, S/N 578216, BLADE WELDER
- KALAMAZOO HORIZONTAL BANDSAW, MDL H9AWV, S/N 15659
- SCOTCHMAN CUTOFF SAW, PLATE N/A 12" BLADE

**MISC. MACHINERY:**

- AMADA NOTCHER/PUNCH MDL CSW-250, S/N. 28008034, MFG 1988
- OTTO MULLER PLOCHINGEN RADIAL ARM VERTICAL MILL, S/N 1964MFG 1968, 15" X 42" TABLE
- ROCKWELL DELTA COMBINATION GRINDER
- PULLMAX CIRCLE SHEAR MDL P5, S/N 52678, 40" THROAT

**PLATE BENDING ROLL:**

- ROUND0 MDL IP120/6, S/N 2585, 1994, 72" X 10 GR, INITIAL PINCH
- 8" INITIAL PINCH

**ROSEN**  
SYSTEMS

2323 LANGFORD STREET, DALLAS, TX 75208

972-248-2266

INFO@ROSENSYSTEMS.COM

**SHOP CLOSED**

# PUBLIC AUCTION

**LIVE ONSITE AND WEBCAST BIDDING**

- **MACHINE SHOP** •
- **CNC VERTICAL MACHINING CENTERS** •
- **CNC MINI MILL** • **CNC LATHES** •
- **MILLING MACHINES** • **LATHES** • **SAWS** • **FORKLIFT** •
- **SURFACE GRINDERS** • **HYD. PRESSES** • **TOOLING** •
- **PLANT SUPPORT & OFFICE EQUIPMENT** •



**3107 29TH AVENUE E  
BRADENTON, FLORIDA**

TO BE SOLD ON THE PREMISES AND BY LIVE INTERNET BIDDING

**THURSDAY, MARCH 21ST AT 11:00 A.M. (ET)**

★ **LIVE ONSITE & LIVE ONLINE BIDDING** ★  
**AVAILABLE AT [WWW.BIDSPOTTER.COM](http://WWW.BIDSPOTTER.COM)**  
**SEND for DESCRIPTIVE BROCHURE or VISIT**  
**our WEBSITE at [WWW.POSNIK.COM](http://WWW.POSNIK.COM)**

## **SALE PER ORDER OF CENTER LINE TOOL**

**TERMS OF SALE:** 25% DEPOSIT CASH OR CERTIFIED CHECK

15% BUYER'S PREMIUM APPLIES ON ALL ONSITE PURCHASES

18% BUYER'S PREMIUM APPLIES ON ALL ONLINE PURCHASES

OTHER TERMS TO BE ANNOUNCED AT TIME OF SALE

**INSPECTIONS:** WEDNESDAY, MARCH 20TH – 10:00 A.M. TO 4:00 P.M.

**& MORNING OF SALE – 8:30 A.M. TO 11:00 A.M.**

PAUL W. SCHEER, FL LIC. #AU-0200234 • AARON POSNIK & CO., INC. FL LIC. #AB-001697



Corporate Office  
31 Capital Drive  
West Springfield, MA 01089  
413-733-5238 Fax 731-5946  
MA Auc. Lic. #161

Aaron Posnik & Co., Inc.  
Established 1932

Branch Office  
P.O. BOX 247  
Malvern (Philadelphia), PA 19355  
610-853-6655 Fax 853-6633  
PA Auc. Lic. #AY000241L

• [www.posnik.com](http://www.posnik.com) • Toll Free 1-877-POSNIK-1 (767-6451) • E-mail: [info@posnik.com](mailto:info@posnik.com) •



# LIVE WEBCAST ONLINE ONLY AUCTION

**porite**  
Jefferson Corporation

Powder Metal Components Manufacturer  
Plant Closure

**SALE DATE**  
**Tuesday, March 26**  
**10 AM CT**

## SALE LOCATION

1535 Fairgrounds Rd., Jefferson City, MO 65109

## INSPECTION

Monday, March 25, from 9 AM to 3 PM CT, or by appt.



FEATURING: (8) Sizing Presses, (9) Compacting Presses, Furnaces & Ovens, Nitrogen Generators, Air Compressors, (10+) CNC Gang Tool Lathes, EDM, Machine Tools, Vibratory Bowls, Zeiss CMM's, Inspection & Testing Equipment, Cranes, Hoists, MRO, Switchgear & Plant Support Equipment

In conjunction with:



## AUCTION CONTACT:

Jennifer Reiner • (847) 545-6374  
jennifer@perfectionindustrial.com



**PERFECTION**  
Industrial Sales  
[www.perfection.global/auctions](http://www.perfection.global/auctions)

# TIMED ONLINE ONLY AUCTION

By Order of Owner



## IMMACULATE CNC SHEET METAL FABRICATION FACILITY

**EVERYTHING MUST SELL!**



Amada FO-3015NT CNC Laser



Amada Pega 345 CNC Turret Fabricator



Amada RG-50, 50-Ton Power Press Brake

### CNC LASER

2007 Amada Mod. FO-3015NT CNC Laser

### CNC FABRICATORS

Amada Pega 345 CNC Turret Fabricator  
Amada Pega 357 CNC Turret Fabricator

### PUNCHES & DIES

### PRESS BRAKES

Amada RG-50, 50-Ton Power Press  
Amada RG-25, 25-Ton Power Press Brake  
Di-Acro Houdaille 7525 Hydra-Power Press Brake  
(2) Wysong H-60-86 Power Press Brakes  
Amada RG-100, 100-Ton Power Press Brake  
Amada Promecam 8025 Progr. Power Press Brake  
Wysong 160-10, 10' x 160-Ton Power Press Brake

### PRESS BRAKE DIES

### POWER SHEAR

Amada Type Power Shear with FOPBG, Front Extensions, Squaring Arm  
Wysong K-2510 Power Shear with Front Extension & Squaring Arm

### CORNER NOTCHER

Amada CS-220 Corner Notcher, 10-Ton Capacity

### INSERTION PRESSES

Haeger Insertion Press  
Haeger 824 Insertion Press

### PUNCH PRESS

Rouselle 60-Ton Punch Press

### DIES

### COMPLETE POWDER COAT PAINT SYSTEM

### ROLLING STOCK

Mitsubishi FGC25N, 4,000lb. LPG Forklift with Overhear Guard, Hard Tires  
Isuzu Bobtail Truck, Turbo Intercooled Diesel

### MISC. EQUIPMENT

Di-Acro Power Turret Punch Press • Torit Donaldson ADF02-8, Dust Collector, 7.5HP • MaxMill Vertical Mill • (4) Spot Welders • Heavy Duty Welding Tables • Miller Arc Welders • Dbl. End Grinder/Buffer • Grieve Oven • Vertical Panel Saw • Combo Belt & Disc Grinder • Cantilever Racks • Pallet Racking • Scrap Bins • (2) Poly Storage Tanks • Granite Surface Plates • Strapping Units • Shop Tables & Carts

**Lots Begin Closing: Wednesday, April 3rd at 11am PT**

Tri-Way Industries, Inc. – 506 44th St. NW, Auburn, WA 98001

**INSPECTION: Tuesday, April 2nd, 9am to 4pm PT, Morning of Sale or By Appointment**

ONLINE BIDDING ONLY – BID AT: **BidSpotter**



Sale Conducted by:

**TAUBER-ARONS, INC.**

Industrial Auctioneers & Liquidators since 1892

For An Auction Calendar Visit Our Website:

[www.tauberaronsinc.com](http://www.tauberaronsinc.com)

**323.851.2008 | 888.648.2249**



# 2 TIMED ONLINE AUCTIONS

## ALL INDUSTRY CONSIGNMENT AUCTION!

### VARIOUS INDUSTRIES AND LOCATIONS

**MULTI LOCATIONS IN THE FOLLOWING STATES:**

MISSOURI, FLORIDA, WASHINGTON, MASSACHUSETTS, ARIZONA, OREGON, GEORGIA, OHIO

**BidSpotter**

**Ends from April 4, 2024 10am CT**

**See lot for details!**



## COMPLETE SUGAR PACKAGING PLANT CLOSURE - OVER 500 LOTS!

**IN CONJUNCTION WITH STEEP HILL EQUIPMENT, SCHNEIDER INDUSTRIES WILL CLOSE A SUGAR PACKAGING PLANT AUCTION ON APRIL 11TH**

**Located: Los Angeles, CA**

**BidSpotter**

**Ends from April 11, 2024 10am CT**

**PREVIEW: By appointment only. - See lot for details!**



Visit [www.schneiderindustries.com](http://www.schneiderindustries.com) for more information about this auction!



**SCHNEIDER INDUSTRIES, INC.**

121 Hunter Ave., Suite 204 • Saint Louis, MO 63124

314-863-7711 • [www.schneiderindustries.com](http://www.schneiderindustries.com)

# ONLINE AUCTION ONLY

## GLADES FORMULATING CORPORATION

Assignment for the Benefit of Creditors Case No. 50-2023-CA-013463-XXXX-MB

**Auction Ends/Lots Close:**  
**Tuesday, March 19, 2024 at 10:00 A.M.**

**Pick-up | Removal Locations:**  
909 NW 13 Street, Belle Glades, FL 33430

**Inspection | Preview Date: Monday, March 18**  
**from 10:00 A.M. to 4:00 P.M. by appointment**



Sale will consist of Agricultural Chemical Manufacturing Equipment including (3) agitators, (5) 5,000 gallon tanks, (1) 4,000 gallon stainless steel storage tank, electrical pumps (one 3 inch and two 2 inch), (2) granular tumblers, assembly line including the following: foiler, conveyer belt, (2) labelers, lot number scanner, capper, case erector, tape machine, and 4 head gravity feeder filler, Toyota forklifts, various power tools and hand tools, air compressors, new raw materials for producing treatment chemicals, 1991 Wells Cargo enclosed gooseneck trailer VIN 1WC200R27M3022348, office furniture, office equipment and much more.

18% Buyer's Premium (BP) will apply to all lots.

Live Online Bidding Powered By: **proxibid**

Check Website for More Info., Photos, and Catalog:  
**www.moeckerauctions.com**

**MOECKER AUCTIONS**  
AUCTIONEERS • LIQUIDATORS • APPRAISERS

AU 3219, Eric Rubin  
AD 1006

1885 Marina Mile Blvd., Suite 103 • Fort Lauderdale, FL 33315  
Toll Free 800-840-BIDS • Phone: 954-252-2887  
info@moeckerauctions.com

**www.moeckerauctions.com**



FULL-SERVICE MACHINE TOOL REBUILDING AND RETROFITTING SHOP

**AUCTION DATE: MARCH 6TH AT 12PM EDT THROUGH MARCH 12TH AT 1PM EDT**

LOT ONE ENDS AT 1PM EDT WITH A 45 SECOND STAGGER BETWEEN LOT CLOSINGS WITH A 2 MINUTE SOFT CLOSE

117 ELM STREET • TERRE HAUTE, IN 47807

**MACHINE TOOL SERVICE, INC**

GALLIVAN IS PLEASED TO OFFER THIS FULL-SERVICE MACHINE SHOP LOCATED IN TERRE HAUTE INDIANA. THIS SALE WILL INCLUDE A CNC WAY GRINDER, VERTICAL BORING MILL, VERTICAL AND HORIZONTAL MILLS, LATHE, GRINDERS, SAWS, WELDING EQUIPMENT, TOOLING, PRECISION TOOLING, AND MUCH MORE!

METAL WORKING EQUIPMENT - CNC WAY GRINDER, LUMSDEN, MDL 6262MNO, EP2209, SER# 62MM019754, 1979, FANUC 16M CNC CONTROLS, 39"X61"X240" VERTICAL BORING MILL, SHIBAURA TOSHIBA MACHINE, MDL TMC-13A, SER# 420039, 1984, NEEDS CONTROLS, TOOL CHANGER ON RACKING, IDLE JIG BORE MILL, GIDDINGS & LEWIS, 300 SERIES, MDL 358 (350T), SER# 103-15-62, FAGOR DIGITAL READOUT, MINI WIZARD, 3"X45"X37" SURFACE GRINDER, GALLMEYER & LIVINGSTON, MDL #5, 12"X36" HORIZONTAL MILL, CINCINNATI, MDL 410-14, SER# 2J4P5H-2, 14"X68" VERTICAL MILL, BALDING ENG., BEAVER MACHINE, MDL VBPR, SER# 3919-2, ANILAM WIZARD DRO VERTICAL MILL, BRIDGEPORT, SERIES II, SER# 2694, POWER FEED VERTICAL MILL, MILWAUKEE, MDL K, SER# 3956 LATHE, MONARCH, MDL 10" EE, SER# FF15612, 12.5" SWING, 20" CENTER LATHE, SOUTH BEND, 14-1/2", SER# 8199FRL10, 8.5" SWING, 37" CENTER LATHE, LONGEM, MDL LG-1760DS, SER# 970466, 1997, FAGOR DIGITAL READOUT, 17.5" SWING, 60" CENTER LATHE, AMERICAN HUSTLER, TAILSTOCK, NEW MOTOR, LESSON SPEEDMASTER, 20"X60" HORIZONTAL BANDSAW, KALAMAZOO, MDL H9AW, SER# K22149 VERTICAL BANDSAW, GROB, MDL NS18, SER# 10811, W/ BLADE WELDER CHOP SAW, SEVERALL, MDL 1A IRON WORKER, KLING BROS, MDL #4 KLING COMBO, SER# 3721, 1952, 60 TON, ANGLE, PUNCH, NOTCH CNC MACHINING CENTER, MORI SEIKI, MDL SL-OB, SER# 629, IDLE RADIAL ARM DRILL, AMERICAN, 4'11", DRILL# 60340, 10"X48" OD GRINDER, CINCINNATI SHAPER, GOULD AND EBERHARDT, MDL 16-20, 16-20" H-FRAME SHOP PRESS, DAKE, 75 TON, HYDRAULIC OVER MANUAL MEDIA BLAST CABINET, GAMM, MDL 48X36, SER# MP1831625 CHIP CONVEYOR, JORGENSEN MIG WELDER, HOBART, MDL BETA MIG, 250 PLASMA CUTTER, HOBART, MDL AIRFORCE 400 COMPRESSOR, WESTINGHOUSE, 80 GAL., 7.5HP CHILLER, ADVANTAGE, MDL LC-3A-21HFC, SER# 11507 TRANSFORMER, SOLA-HEVI-DUTY, MDL DT651H51S, 51 KVA, 460 DELTA, 64 AMP ROLLING STOCK - FORKLIFT, WHITE, EST. 7,000 LBS. CAP, LP, 2 STAGE PICK-UP TRUCK, GMC, SIERRA 1500, VIN#1GTEC14K35Z173928, 2005, 4.3L V6, AUTO TRANS, CAMPER SHELL, UNKNOWN MILEAGE SMALLS - SMALL EQUIPMENT TO INCLUDE BUT NOT LIMITED TO PRECISION EQUIPMENT, GRANITE TABLES, STEEL PRECISION TABLES, LADDERS, DOUBLE ENDED GRINDERS, MACHINE TOOLING, HAND TOOLS, POWER TOOLS, WORK BENCHES, THREADERS, ADJUSTABLE GANTRY CRANES, PARTS WASHERS, PRECISION SQUARES, WIRE, SHELVING, SLINGS, CABLES, INDICATORS, GAGES, EYE BOLTS, HOOKS, CARTS, ETC.

**GALLIVAN**

AUCTIONEERS AND APPRAISERS

**CONTACT US**

www.njgallivan.com

License #AC32000003

317-227-3720

CHECK WEBSITE FOR FULL INVENTORY, PHOTOS & TERMS OF SALE.

## SURPLUS INDUSTRIAL EQUIPMENT AUCTION - Mocksville

Don't miss our online auction featuring a wide variety of Industrial Machinery, Parts, and Equipment.

Bid on items such as a Propane-Modified GM Engine, Trane COL25552 Coil Outdoor Micro Channel, Eaton Clutches, Avery Weigh-Tronix Forklift Scale Systems, and MUCH MORE.

Discover incredible deals and cost-saving opportunities on high-quality equipment for your business.

**AUCTION IS OPEN NOW AND ENDS MARCH 19TH**



Visit

<https://www.grafeauction.com/event/surplus-industrial-equipment-mocksville-nc> to view the full catalog and start bidding today!

For more information, contact

Bret Walters call/text (507) 208-2477 or email [bret@grafeauction.com](mailto:bret@grafeauction.com)

**GRAFE**  
AUCTION

(800) 328-5920 • [www.grafeauction.com](http://www.grafeauction.com)



# Angermeier Tool & Die

**Auction Date:** Wednesday, March 27th - 10:00 AM  
2414 Glades Pike • Somerset, PA



**Forklift • F-350 • Haas VF-5 VMC • Bridgeport Mill  
Lathes • Band Saws • Surface Grinders**

*One of the cleanest tool & die shops we've ever sold. Building sold, 3 week removal required.*



**Hartland Machinery Auctioneers**

P.O. Box 209, Portersville, PA 16051

Phone 724-368-9788 • Fax 724-368-9839

info@hartlandmachinery.com • www.hartlandmachinery.com

PA LIC# AU-002918-L • PA LIC# AY-000190-L

**NEW MARKETING OPTION**

## DRIP CAMPAIGN

a series of automated emails sent to people who take a specific action on your website

- 1 Initial Email**
- 2 Follow Up Email**
- 3 Reminder Email**

A drip campaign is a series of automated emails sent to people who take a specific action on your website. For any given action, you can choose how many emails to send and the rate at which to send them.

**GREAT FOR AUCTIONS, EVENTS, AND MORE!**

published by **CATALYST**

**call 800-203-9960**

## ONLINE AUCTION ONLY

**BIT5IVE, LLC**

Assignment for the Benefit of Creditors Case No.: 2023-027767-CA-01

**Auction Ends/Lots Close:**

**Thursday, April 4, 2024 at 10:00 A.M.**

**Pick-up | Removal Locations:** 3161 W McNab Road, Pompano Beach, FL 33069.

**Inspection | Preview Date:** Wednesday, April 3 from 10:00 A.M. to 4:00 P.M. by appointment

Sale will consist of  
Hyster forklift Model:  
S120FT-PRS, Canon iR  
C5535i Copier, CanArm  
HVAC ADD Direct  
Drive Wall Fans, TITR  
Energio Panel Power  
Distribution Units,  
Siemens Panelboards,  
ReliaGear Next  
Panelboards, ReliaGear  
Next Ground Kits,  
Sapphire graphics  
cards, Jefferson  
Electric transformers,  
Monitors, Projectors,

Printers, Bitmain Antminers, Antminer  
hashboards, Flex drill kits and lithium-  
ion batteries and more.

18% Buyer's Premium (BP) will apply to all lots.

Live Online  
Bidding

Powered By  
**proxibid**

**Check Website for More Info., Photos, and Catalog:**

**www.moeckerauctions.com**

**MOECKER  
AUCTIONS**  
AUCTIONEERS • LIQUIDATORS • APPRAISERS

AU 3219, Eric Rubin  
AB 1098

1885 Marina Mile Blvd., Suite 103 • Fort Lauderdale, FL 33315

Toll Free 800-840-BIDS • Phone: 954-252-2887

info@moeckerauctions.com

**www.moeckerauctions.com**

## Upcoming Auctions

Visit our sister site!

**MyEquipAuctions**  
.com**BidSpotter**  
FIND  
INDUSTRIAL  
EQUIPMENT  
& MORE.

Date	Auctioneer	Auction Type	Location	
<b>January</b>				
01/30/24 to 03/28/24	Apex Auctions, USA	Time Online Auction	Midvale, UT	<a href="#">View &gt;</a>
01/31/24 to 03/07/24	Apex Auctions, USA	Time Online Auction	West Dundee, IL	<a href="#">View &gt;</a>
<b>February</b>				
02/09/24 to 03/06/24	Apex Auctions, USA	Time Online Auction	Darien, OH	<a href="#">View &gt;</a>
02/15/24 to 03/13/24	Apex Auctions, USA	Time Online Auction	Johnson City, NY	<a href="#">View &gt;</a>
<b>March</b>				
03/01/24 to 03/22/24	Collar City Auctions	ONLINE AUCTION	Rotterdam, NY	<a href="#">View &gt;</a>
03/05/24 to 03/29/24	Premier Asset Recovery Group	ONLINE ONLY AUCTION	Muskegon, MI	<a href="#">View &gt;</a>
03/05/24 to 03/19/24	Premier Machinery Auctions LLC	ONLINE AUCTION	Isabrook, WI	<a href="#">View &gt;</a>
03/06/24	Plant & Machinery Inc.	Live Onsite w/Webcast	Houston, TX	<a href="#">View &gt;</a>
03/06/24 to 03/12/24	Gallivan Auctioneers & Appraisers	ONLINE AUCTION	Terre Haute, IN	<a href="#">View &gt;</a>
03/06/24	Myron Bowling Auctioneers, Inc.	LIVE WEBCAST AUCTION	Tijuana, B.C., Mexico,,	<a href="#">View &gt;</a>
03/07/24	Capital Recovery Group, LLC	ONLINE ONLY AUCTION	Kalamazoo, MI	<a href="#">View &gt;</a>
03/07/24 to 03/21/24	Premier Machinery Auctions LLC	ONLINE AUCTION	Blaine, MN	<a href="#">View &gt;</a>
03/07/24 to 03/21/24	Premier Machinery Auctions LLC	ONLINE AUCTION	Blaine, MN	<a href="#">View &gt;</a>
03/11/24 to 03/20/24	Glenn A. Winternitz	Timed Auction	MELROSE PARK, IL	<a href="#">View &gt;</a>
03/12/24	Capital Recovery Group, LLC	Online Bidding Only	Charlotte, NC	<a href="#">View &gt;</a>
03/12/24 to 03/19/24	Premier Machinery Auctions LLC	ONLINE AUCTION	Spring Lake Park, MN	<a href="#">View &gt;</a>
03/12/24	Integra Asset Solutions	ONLINE AUCTION	Hartland, WI	<a href="#">View &gt;</a>
03/13/24 to 03/14/24	Plant & Machinery Inc.	ONLINE AUCTION	Katy, TX	<a href="#">View &gt;</a>
03/19/24	Moecker Auctions Inc.	Online Auction Only	Belle Glades, FL	<a href="#">View &gt;</a>
03/19/24 to 03/20/24	Maynards Industries	Webcast Only Auction	Langley , BC , V2Y 1N1 Canada,	<a href="#">View &gt;</a>

1 2 next › last »

[www.industrialmachinetrader.com/auctions/upcoming](http://www.industrialmachinetrader.com/auctions/upcoming)